

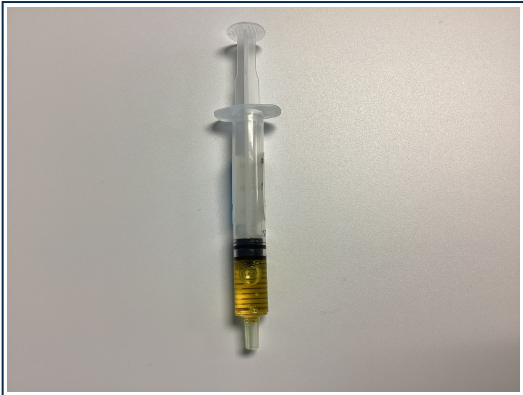


261 Mountain View Dr
 Colchester, VT 05446
 License #: TLAB0030
 802-767-7256
 info@vt.steepphill.com

Certificate of Analysis

Client Name: Sunset Lake Cannabis
License Number: CLTV-0069

Sample ID: VT1071
Sample Name: Sativa Cart Sample 2
Sample Lot: CLTV0069-001
Sample Matrix: Solvent Extraction Concentrates
Date Received: 3/13/2023
Date Reported: 3/20/2023



Terpenes

Standard terpene analysis utilizing Gas Chromatography – Mass Spectrometry (GC-MS; SOP-069-VT) | Test ID: #2032

Analyte	Result (%)	Result (mg/g)	LOD (mg/g)	LOQ (mg/g)
α-Pinene	0.1585	1.585	0.004	0.013
Camphene	< LOQ	< LOQ	0.003	0.009
β-Pinene	0.2215	2.215	0.004	0.013
Myrcene	1.2196	12.196	0.004	0.014
3-Carene	0.077	0.77	0.003	0.009
α-Terpinene	< LOQ	< LOQ	0.004	0.025
Isopropyl Toluene	ND	ND	0.005	0.016
Limonene	0.3962	3.962	0.004	0.012
Cineole	< LOQ	< LOQ	0.003	0.009
Ocimene	0.2663	2.663	0.004	0.012
gamma-Terpinene	< LOQ	< LOQ	0.005	0.015
α-Terpinolene	2.0745	20.745	0.005	0.014
Linalool	< LOQ	< LOQ	0.005	0.014
Isopulegol	ND	ND	0.004	0.012
Geraniol	ND	ND	0.011	0.034
trans-Caryophyllene	1.4169	14.169	0.004	0.013
α-Humulene	0.6387	6.387	0.003	0.009
Nerolidol	< LOQ	< LOQ	0.011	0.034
Caryophyllene Oxide	0.0884	0.884	0.006	0.017
Guaiol	0.2029	2.029	0.003	0.009
α-Bisabolol	0.1489	1.489	0.005	0.014
Total Terpenes	6.9094	69.094		

Callie Chapman
 Lab Director
 3/20/2023



In performing the services, Steep Hill Vermont Labs, (“SHVT”) shall exercise a degree of skill and care ordinarily exercised by a reasonably prudent laboratory professional under similar circumstances. Except as set forth in the preceding sentence, client acknowledges and agrees that: (a) the services may require SHVT to make judgements based upon limited data rather than upon scientific certainties; (b) SHVT’s approach, recommendations, and associated cost estimates, if any, are based on industry practices and averages; (c) SHVT renders its opinions with respect to observations made and data available at the time of testing; (d) ultimate outcomes could be inconsistent with SHVT’s conclusions, results and projections; and (e) there may be additional reports relating to the site (whether prepared by SHVT or other parties), and reliance upon any SHVT report without reference to any such other reports is done at client’s sole risk.

